

Stoke Prior Footpaths Report May 23



Please note this is not a fully comprehensive report due to time constraints and not all the paths have been walked, but I feel I have covered most of the problem areas, and hope the parish council can act on these findings. Many areas were cut back in January / February by myself with help from Louis Baker, but at this time of year weeds, etc will be growing back very quickly, so maybe not all the paths are looking their best at the moment. It is of course a never ending task, so Hugh's suggestion earlier this year about getting a working group / volunteers together on weekend was a very good one, but needs to be in conjunction with the landowners. The best way to keep paths clear is for as many people as possible to actually use them, so we hope to encourage as many people as possible to get out there and walk the routes. I look forward to some new initiatives from the parish council to encourage this, maps in the village, publishing circular walks, etc. Maybe in a similar style to Eardisland memorial walks which are marked to commemorate fallen soldiers.

Just a few observations and things that have come up time and time again when people get in touch are noted below,

Most people would love to see some extra kissing gates, and lower stiles that are easier to climb over specifically with dogs without compromising the needs of landowners, keeping stock safe, etc. If not how about dog gates than can be lifted?

It would be nice if more farmers could mark out paths across crops similar to the picture on the left. This of courses makes life easier for all concerned and prevents walkers from straying across the crops.

Moving forward I think it may be a good idea if we could adopt the What 3 Words system. This could then be used by the lengthsman to quickly pinpoint problem areas without the need for map coordinates, etc.

<https://what3words.com/about>

Mike Hayward

STOKE PRIOR Footpath 7

Town: STOKE PRIOR

Street id: 23228369

Path reference: **SP7**

From: C.rd. opposite Croft Gate

To: C.rd. 40 yds. SSE of Church House

This path runs alongside Midsummer House and crosses the garden of 'Silkwood'. Both of these owners are very helpful and help maintain the path. It is therefore in very good order. In summary SP7 Short and sweet

STOKE PRIOR Footpath 1

Town: STOKE PRIOR

Street id: 23228311

Path reference: **SP1**

From: C.rd. opposite The Lamb Inn

To: F.P 4, 250 yds. NNW of Shuttocks Field

Unfortunately, this path where it begins opposite The Lamb has disappeared of the face of the earth. There are no signs anywhere. The parish definitive map shows it running to the left of the Dingle as does the Ordnance Survey. I believe that at one time it crossed the garden of the Dingle? I have never been able to find it. I would suggest this needs to be looked at as a matter of **urgency** before it is lost forever.

STOKE PRIOR Footpath 9

Town: STOKE PRIOR

Street id: 23228373

Path reference: **SP9**

From: C.rd. 110 yds. ENE of Bury Farm

To: BR28, at P.bdy. 370 yds. W of Little Wickton

This path begins in the centre of the village passing around the back of the village hall, crossing Bemond's field and is generally well maintained and signed. The only problem being the height of the stiles which are very awkward and almost impossible to cross with a dog. The path then runs parallel to SP10 near a wooded area that belongs to Jenny Jackson. It then continues up to the bridleway 3 The stiles in Jackson's field were very overgrown and impassable in the winter. I cleared these as best I could, so they are now improved. ***(See images)***

STOKE PRIOR Footpath 10

Town: STOKE PRIOR

Street id: 23228313

Path reference: **SP10**

From: Acc Rd. 40 yds. S of railway bridge 280 yds W of Old Hill

To: C.rd. 360 yds. NE of Lower Wickton

This route begins at Normans lane in Jenny Jackson's field and goes into a wooded area which has not been cleared for many years. I have chopped back as much as I can but there are a number of fallen trees which were too large for me to cut. These would probably require a small chainsaw. The stiles are in generally good order.

(See images)

STOKE PRIOR Footpath 8

Town: STOKE PRIOR

Street id: 23228371

Path reference: **SP8**

From: C.rd. 330 yds. WSW of St. Luke's Church

To: Acc. Rd. at Bryn Hyfryd

This starts at Bury Farm, crossing the field. I haven't managed to walk this route myself yet, but was it was pointed out to me by a member of the public in the village that the area by the wooden footbridge had become overgrown and difficult to pass. (Just behind the church, near the pond) This will require further investigation, but I don't think it's serious. (*See picture*)

STOKE PRIOR Footpath 21

Town: STOKE PRIOR

Street id: 23228333

Path reference: **SP21**

From: C.rd. 220 yds. ESE of Causeway Cottage

To: C.rd. at railway bridge 130 yds. NNW of Old Hall

No real issues with this path that passes through an orchard behind Eastmead before meeting up with Hilltop Farm apart from a broken wooden fingerpost farm at the road next to Spring cottage and a wobbly stile / fence when you leave the orchard and climb uphill towards Hilltop. I have already mentioned the broken sign to the Clerk. This will need replacing as it has rotted at the bottom.

(See images)

STOKE PRIOR Footpath 19

Town: STOKE PRIOR

Street id: 23228325

Path reference: **SP19**

From: C.rd. 120 yds. SW of Humber Bridge

To: C.rd. at The Heath

This path runs through the Humber burial ground and is always well maintained, so no issues to report.

STOKE PRIOR Footpath 20

Town: STOKE PRIOR

Street id: 23228331

Path reference: **SP20**

From: C.rd. junction, 100 yds. E of Ash Croft

To: P.bdy. 300 yds. ENE of The Heath

No issues to report.

STOKE PRIOR Footpath 4

Town: STOKE PRIOR

Street id: 23228359

Path reference: **SP4**

From: End of Acc. Rd. at The Rectory

To: P.bdy. 600 yds. SSW of Stretford Bury

Route passes The Old Rectory where the owners have put in a dog friendly gate (very helpful) the path then continues uphill towards Rock Cottage. You are then met by a locked gate which you have to climb over. This needs to be either unlocked or a stile put in. It was also overgrown which I trimmed back in the winter. I believe the land owner is a Mr Thomas, but not sure. This will need checking. **(See images)**

STOKE PRIOR Footpath 3

Town: STOKE PRIOR

Street id: 23228347

Path reference: **SP3**

From: F.P.1, 250 yds. NNW of Grovefield Cottage

To: C.rd. at Broadstone Farm

No real issues with this path, but it is worth noting that the owner of the derelict cottage, Broadstone? Has applied for planning permission to turn this into vehicular access?

STOKE PRIOR Footpath 5

Town: STOKE PRIOR

Street id: 23228361

Path reference: **SP5**

From: C.rd. 140 yds. S of Rectory

To: P.bdy. 260 yds. W of Jubilee Cottage

The footpath passes Rectory Gate then works its way through part of the garden of The Old Rectory. This is well signed and maintained before crossing fields to reach the A44. The last time I walked this part the path was well kept.

STOKE PRIOR Footpath 13

Town: STOKE PRIOR

Street id: 23228317

Path reference: **SP13**

From: BR17, 250 yds. NW of Witsets Farm

To: BR28, 60 yds. E of Brierymere

A short stretch across a field of crops that has been clearly marked by the landowner.

STOKE PRIOR Footpath 31

Town: STOKE PRIOR

Street id: 23228349

Path reference: SP31

From: C.rd. 250 yds. ENE of Lower Wickton

To: P.bdy. 550 yds. WNW of Lower Wickton

The start of the path is very well kept and maintained by the lady who lives in the bungalow, Mary. It then crosses a couple of stiles. One of which has been repaired where it crosses a ditch. This was in very poor condition, but it is now fine. The path is difficult to find when the crops are in full height. This then meets FD4 and continues to the golf course where this section is easier to follow with better signs, etc.

STOKE PRIOR Footpath 2

Town: STOKE PRIOR

Street id: 23228329

Reference no: **SP2**

This route starts to the left of the Woodhouse and winds its way round the equestrian centre and paddocks. It is generally well signposted and relatively easy to follow apart when it enters the woods and heads downhill to meet SP1 which cannot be found (See SP1 notes)

STOKE PRIOR Footpath 32A

Town: STOKE PRIOR

Street id: 23228355

Path reference: **SP32A**

From: P.bdy. 250 yds. E of Wheelbarrow Castle

To: C.rd. 100 yds. W of Slough

This route starts from Stoke Prior Lane passing the small orchard on the right and is well marked, but the route does suffer from bad flooding.

STOKE PRIOR Footpath 6*

Town: STOKE PRIOR

Street id: 23228367

Path reference: **SP6**

From: C.rd. 150 yds. SE of Wheelbarrow

To: P.bdy. 600 yds. S of Eaton Hall

*Un walked as of 15/5/23 but is usually flooded throughout winter.

STOKE PRIOR Footpath 33*

Town: LEOMINSTER

Street id: 23228357

Path reference: **SP33**

From: FP6, 330 yds. W of Wheelbarrow Castle

To: P.bdy. 700 E of Broadward Bridge

*Un walked as of 15/5/23 but is usually flooded throughout winter



Locked gate / No stile SP4



SP21 Broken Fingerpost sign



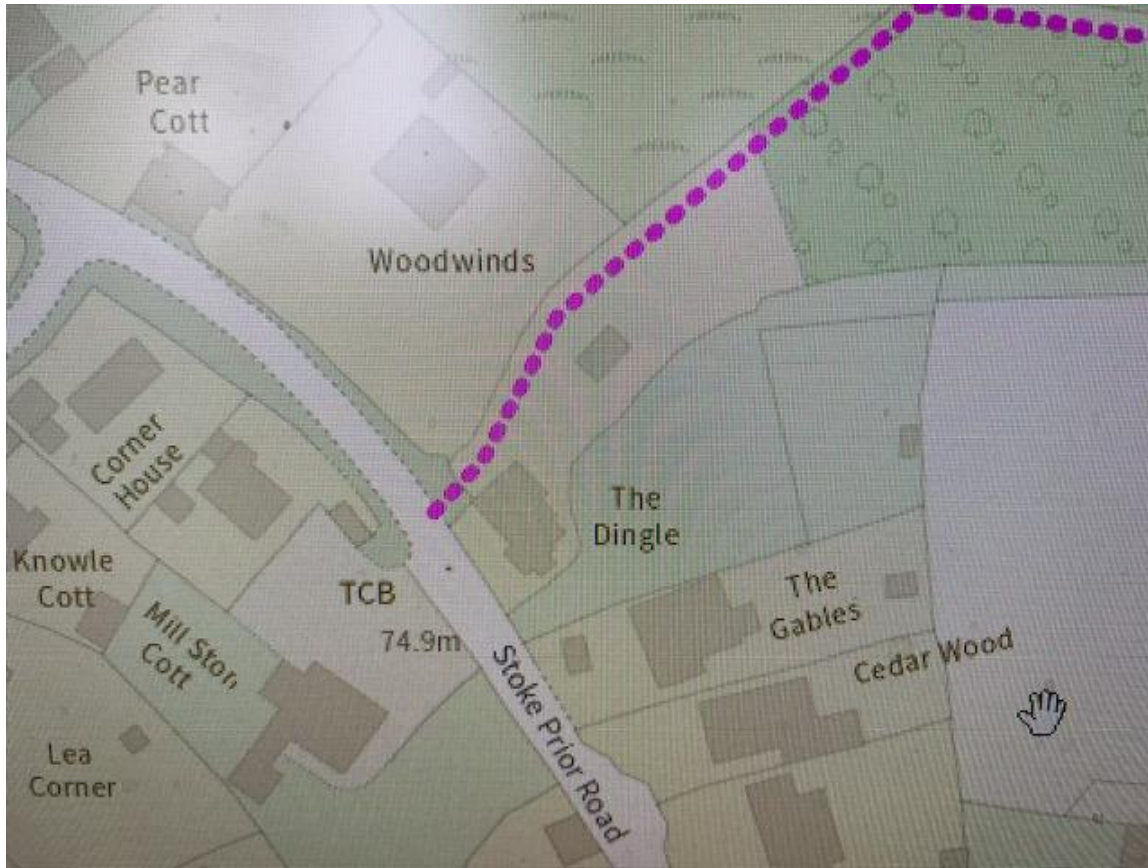
SP10 Fallen branches blocking the path



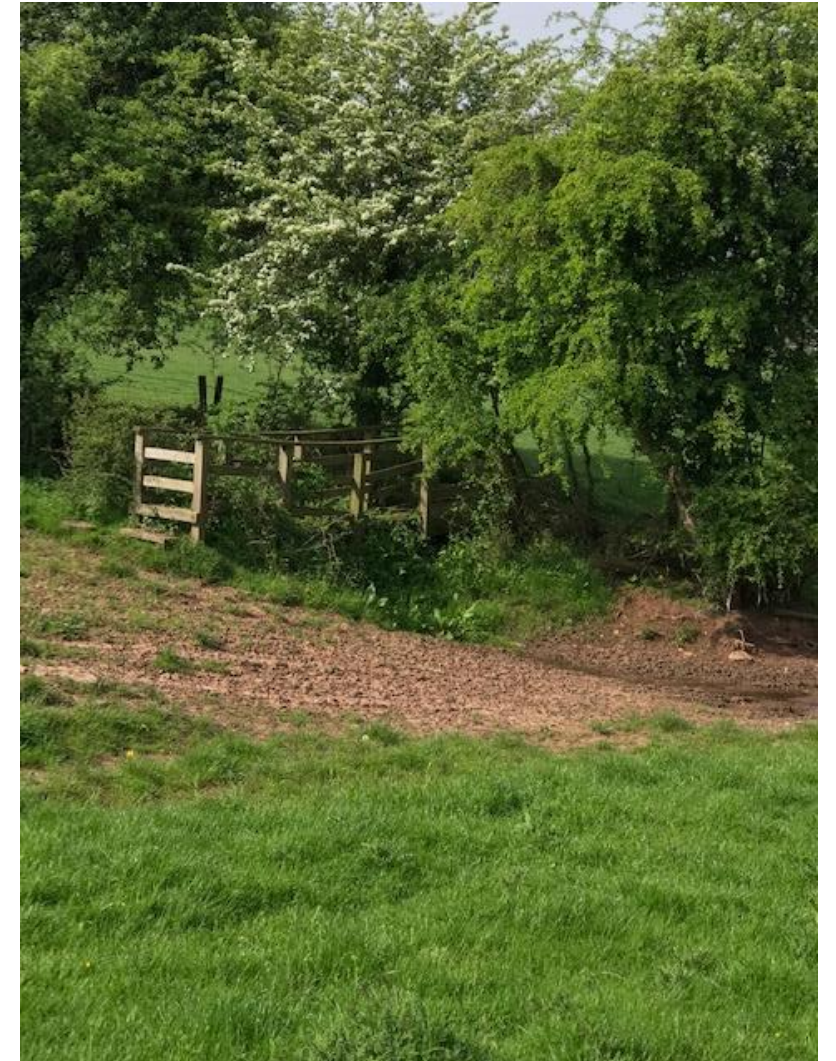
SP9 Before



SP9 After



SP1
Opposite The Lamb Inn (Missing)



SP8 Overgrown footbridge